



CITY OF SURPRISE
Parks and Recreation Advisory Commission
15960 N Bullard Ave
Surprise, AZ 85374

Monday, April 27, 2026 @ 6:00 PM
Recreation Conference Room

- A. Call To Order
B. Roll Call
C. Pledge of Allegiance
D. Current Events and Reports
E. Staff Reports
F. Parks and Recreation Advisory Commission

CONSENT AGENDA:

REGULAR AGENDA ITEM - PUBLIC HEARING:

REGULAR AGENDA ITEM - NON-PUBLIC HEARING:

- 1. Citywide Consideration and action to approve the minutes from the February 2, 2026, Parks and Recreation Advisory Commission. Parks and Recreation
2. Internal Presentation and discussion pertaining to the City of Surprise Parks & Recreation Master Plan. Parks and Recreation

G. Call To The Public

INSTRUCTIONS: In order to address the City Council, you will need to fill out a Call to the Public Form available at the front counter, and then turn it in to the City Clerk before the meeting begins. You may also fill out the Call to the Public form online. If submitting form electronically, please submit to City Clerk at least one hour before the meeting start time.

Note: A.R.S. 38-431.01(H)- During this time members of the public may address City Council only on issues within the jurisdiction of the City Council which are not an item on the agenda. At the conclusion of the open call, City Council may respond to criticism, may ask staff to review the matter or may ask that the matter be put on a future agenda. No discussion or action shall take place on any item raised.

Approval of items on the Consent Agenda – all items with an asterisk (*) are considered to be routine matters and will be enacted by one motion and one roll call vote to the City Council. There will be no separate discussion on these items unless a Councilmember requests, in which event the item will be removed from the consent agenda and considered in its normal sequence on the agenda.

Please be aware that Council Members may not discuss or respond to matters raised during call to the public that are not specifically identified on the agenda. Council Members may however, in their discretion, discuss or respond to relevant matters raised during a noticed public hearing or agenda item.

- H. Other Business and Future Agenda Items
I. Adjournment

POSTED: Posted on April 24th, 2026 @ 3:30 PM

SPECIAL NOTE: PERSONS WITH SPECIAL ACCESSIBILITY NEEDS, INCLUDING LARGE PRINT MATERIALS OR INTERPRETER, SHOULD CONTACT THE CITY CLERK'S OFFICE @ 623.222.1200 OR CLERK@SURPRISEAZ.GOV, BY NO LATER THAN 24 HOURS IN ADVANCE OF THE REGULAR SCHEDULED MEETING TIME.



**CITY OF SURPRISE
Parks and Recreation Advisory Commission**

Council Meeting Date: April 27, 2026
Submitting Department: Parks and Recreation
Staff Recommendations:

Contact Person:
District: Citywide

Consent: No Regular: No Public Hearing: No Report/Discussion: No

Agenda Wording:

Consideration and action to approve the minutes from the February 2, 2026, Parks and Recreation Advisory Commission.

Motion:

Motion to approve the minutes of the February 2, 2026 Parks and Recreation Advisory Commission meeting.

Background:

Objective Analysis:

Policy Compliant:

Financial Impact:

Budget Impact:

FTE Impact:

ATTACHMENTS:

1. 2.2.26 Minutes
-

**CITY OF SURPRISE
PARKS AND RECREATION ADVISORY COMMISSION**

Meeting Minutes

Monday, February 2nd @ 6:00 PM

**Surprise Parks & Recreation Office
15960 N Bullard Ave. SURPRISE, ARIZONA 85374**

CALL TO ORDER

A. Call to Order

B. Roll Call

Members: Chair Patricia Blaisdell, Vice Chair Matt Ives, Michael Wallace, Brent Bailey, Madalyn Volling.

Absent: Wayne Turner, Kimberly Hale

City Staff: Director Holly Osborn, Administrator Kasey Peterson, Administrator Jason Hendrix, Recreation Coordinator Shelby Fenwick

C. Pledge of Allegiance

D. Current Events

No updates from the commissioners.

E. Staff Reports

Holly Osborn gave an update to the board on the master plan survey, Surprise Party attendance numbers, and Sparkling Surprise updates.

Holly also gave an update on our winter sports registration numbers: 1200 basketball, 1100 flag football, and 320 kickball. These numbers are all up from previous seasons.

Lastly, she mentioned the Teen wiffleball tournament coming up, Backyard Bash this Friday, February 6th, and Wayne Turner is stepping down from the commission.

CALL TO THE PUBLIC / PARKS & RECREATION ADVISORY COMMISSION

Jeffrey Hertig, a Surprise resident of 14389 W. Valentine Street and President of the Surprise Pickleball Association, provided updates on the organization's activities, including hosting a youth pickleball tournament and ongoing efforts to increase youth participation in the sport.

CONSENT AGENDA (N/A)

Approval of items on the Consent Agenda

No items were identified as consent agenda items.

REGULAR AGENDA ITEMS – NON-PUBLIC HEARING

Item 1 – INTERNAL – Consideration and action approving the October 27th, 2025 Parks and Recreation Advisory Commission meeting minutes.

Motion to approve the minutes of the October 27th, 2025, Parks and Recreation Advisory Commission meeting – motioned by Brent Bailey, 2nd by Michael Wallace. 5 yes votes. Motion carried.

Item 2 – INTERNAL – Consideration and action pertaining to approval of nominees for the Surprise Recreation Campus Hall of Fame.

Holly Osborn, Parks and Recreation director, explains the history and criteria for nominating individuals for the Hall of Fame, including Major League Baseball alumni and city civic leaders. She also discussed that moving forward, this nomination process and agenda item will be moved to the Sports and Tourism department, since it no longer aligns, and Parks and Recreation is separate from anything Sports and Tourism is doing.

Patricia and Brent from the commission had questions regarding how they would nominate people moving forward if this was no longer going to be a Parks and Recreation commission item. It was explained that they can nominate someone tonight, and moving forward, they would be able to submit nominations to Sports and Tourism if they wish to do so.

Brent Bailey moves to nominate Paul Frie for the Hall of Fame. Patricia seconded the motion. 5 yes votes. Motion carried.

Item 3 - CITYWIDE – Consideration and action pertaining to approval of changes to the Parks and Recreation Fee Schedule.

Kasey Peterson and Jason Hendrix, Parks and Recreation administrators, gave a presentation about the changes to the Parks and Recreation fee schedule.

Kasey explains the process for approving changes to the parks and recreation fee schedule, noting that some changes require council approval. She discusses modifications to recreation services fees, including adding non-resident fees for certain programs.

Jason Hendrix explained the changes to tennis and racquet sports fees, moving from an admission-based model to a rental-based model.

To finish, they both highlight the benefits of the new fee structure, including simplifying the process and encouraging more residents to use the facilities.

OTHER BUSINESS AND FUTURE AGENDA ITEMS

No future agenda items were identified by the commissioners.

ADJOURNMENT

Motion to adjourn by Matthew Ives, 2nd by Michael Wallace, 5 yes votes. Motion carried.

Chair Patricia Blaisdell, Parks and Recreation Advisory
Commission

ATTEST:

Holly Osborn, Director
Parks & Recreation

CERTIFICATION:

I, Shelby Fenwick, Management Analyst for the City of Surprise Parks and Recreation Department, Maricopa County, Arizona, do hereby verify that these are the true and correct minutes of the Parks and Recreation Advisory Commission meeting held on February 2, 2026.

Shelby Fenwick, Recreation Coordinator



**CITY OF SURPRISE
Parks and Recreation Advisory Commission**

Council Meeting Date: April 27, 2026
Submitting Department: Parks and Recreation
Staff Recommendations:

Contact Person:
District: Internal

Consent: No Regular: No Public Hearing: No Report/Discussion: No

Agenda Wording:

Presentation and discussion pertaining to the City of Surprise Parks & Recreation Master Plan.

Motion:

Discussion only

Background:

The Parks & Recreation Master Plan provides the City and the Department an essential planning tool to meet the needs of the community for Parks, Recreation, Open Space and Trails in accordance with national standards. The last Parks & Recreation Master Plan update was completed in 2015. Dig Studio will give a presentation and update pertaining to the Surprise Parks and Recreation Master Plan.

Objective Analysis:

Policy Compliant:

Financial Impact:

The Parks and Recreation Master Plan Update was included in the FY2026 Budget

Budget Impact:

The Parks and Recreation Master Plan Update was included in the FY2026 Budget

FTE Impact:

No impact at this time

ATTACHMENTS:

1. 260409_Surprise Parks and Rec Master Plan_DRAFT PRESENTATION
-



SURPRISE
ARIZONA

PARKS & RECREATION ADVISORY COMMISSION
PARKS AND RECREATION
MASTER PLAN UPDATE
April 27, 2026



01 | INTRODUCTION

02 | PUBLIC OUTREACH

03 | TRENDS, DEMANDS & FORECAST

04 | EXISTING PARK & FUTURE AMENITIES

05 | THE MASTER PLAN

06 | PLAN IMPLEMENTATION



1

INTRODUCTION



2045 GENERAL PLAN GOALS

The development of the Master Plan update supports the primary goals of the 2045 General Plan

- 1. OFFER SUPERIOR RECREATIONAL AMENITIES AND ACTIVITIES**
- 1. FOSTER A SYSTEM OF NATURAL OPEN SPACES**
- 2. INCREASE ACCESS TO WELLNESS OPPORTUNITIES**
- 3. ENSURE QUALITY COMMUNITY SERVICES**
- 4. CULTIVATE AND PRESERVE OUR CULTURE AND HERITAGE**

A Healthy Lifestyle

Surprise values a safe community with modern amenities, including a wide range of outstanding parks and recreational facilities, access to public and health services, and well-supported arts and cultural events and venues.

Chapter 7 – 2045 General Plan

HOW IS THE MASTER PLAN USED

- THE PARKS AND RECREATION MASTER PLAN GIVES **GREATER DEFINITION** AROUND THE SPECIFIC ELEMENTS OF THE PARKS AND RECREATION PROGRAMS.
- IT GUIDES AND **INFLUENCES PRIORITIES**, CAPITAL INVESTMENTS, AND PHYSICAL IMPROVEMENTS
- IT SUPPORTS AND **PROVIDES CONSISTENCY** WITH OTHER PLANS SUCH AS ACTIVE TRANSPORTATION, AND PUBLIC FACILITIES
- IT **INFLUENCES PRIVATE DEVELOPMENT** FOR RECREATION, TRAILS AND OPEN SPACE NEEDS
- IT IDENTIFIES WHERE **FUTURE RECREATIONAL FACILITIES** WILL BE NEEDED TO SUPPORT A GROWING COMMUNITY
- IT **SUPPORTS PARTNERSHIPS** WITH COUNTY, STATE, AND FEDERAL AGENCIES TO MEET THE RECREATIONAL AND OPEN SPACE NEEDS.

MASTER PLAN ORGANIZATION

The plan is arranged around six master plan elements

GREEN ARMATURE FRAMEWORK



PARKS



COMMUNITY FACILITIES



OPEN SPACE & NATURAL LANDS



GREENWAYS & CONNECTED CORRIDORS



BIKEWAYS AND MULTI-USE PATHS



2

PUBLIC OUTREACH



PURPOSE OF PUBLIC INPUT

Public input is essential to ensure that the master plan reflects the values, aspirations, and needs of the community.

IDENTIFY

- RECREATION PRIORITIES AND UNMET NEEDS

UNDERSTAND

- HOW RESIDENTS CURRENTLY USE PARKS, TRAILS, AND FACILITIES

EVALUATE

- GAPS IN ACCESS, PROGRAMMING, AMENITIES, OR QUALITY

EXPLORE

- CULTURAL, AGE-SPECIFIC, ADAPTIVE AND EQUITY BASED NEEDS

STRENGTHEN

- PARTNERSHIPS AMONG SCHOOLS, NON-PROFITS, PRIVATE ORGANIZATIONS AND HOA'S

ENSURE

- THAT INVESTMENTS ALIGN WITH THE GENERAL PLAN'S VISION FOR COMMUNITY WELL-BEING, CONNECTED NEIGHBORHOODS, AND QUALITY OF LIFE



PUBLIC INPUT METHODS

Public input is essential to ensure that the master plan reflects the values, aspirations, and needs of the community.

BROAD RANGE OF INPUT METHODS DESIGNED TO REACH A BROAD DEMOGRAPHIC BASE

IN-PERSON WORKSHOPS

- IDENTIFY PRIORITIES, PREFERENCES AND PROGRAMMING

PUBLIC SURVEY

- MEASURE SATISFACTION AND CURRENT PARK USE

ON-LINE “BUILD A PARK” ACTIVITY

- WHAT APPEALS TO THE PUBLIC AND THEIR NEEDS

ON-LINE MAPPING TOOL

- IDENTIFIES AND LOCATES A PARK NEED OR CONCERN

METHOD	PURPOSE	OUTCOME
ONLINE RESIDENT SURVEY	Measure satisfaction, identify priorities, understand preferences	Quantitative data on park use, facility needs, and programming demand
BUILD A PARK ACTIVITY	Identify what appeals to the public and their ideals for parks, and highlight the community's priorities	Quantitative data on preferences and perceived needs
ONLINE MAPPING TOOL	Allow community to locate areas of need and concern for new and existing park amenities	Quantitative data on geographic need

PUBLIC PARTICIPATION

SURVEY PARTICIPANTS – 1,700 RESPONSES

- QUESTIONNAIRE AND COMMENTS

BUILD A PARK PARTICIPANTS – 130

- 3 IN-PERSON WORKSHOPS
- 8TH GRADE CLASS STUDENTS
- 1 COUNTRYSIDE WORKSHOP DURING SPORTS GAMES

ON-LINE MAPPING – 42 COMMENTS

- COMMENTS ON A VARIETY OF ISSUES

SURPRISE PARTY – INFORMATION BOOTH

- CREATED INTEREST AND GATHERED RESIDENT CONTACTS



WHAT WE LEARNED

SURVEY RESULTS:

- EXPANDING PARKS
- RECREATIONAL FACILITIES
- TRANSPORTATION PATHWAYS (BIKING & WALKING)
- PICKLEBALL
- SHADE
- ACCESSIBILITY
- INDOOR FACILITIES

BUILD A PARK PARTY TOP ACTIVITIES INCLUDE:

- RAMADAS AND PICNIC AREAS
- LARGE PLAYGROUND
- PRESERVE TRAILS
- DOG PARK
- LARGE SPORTS FIELD COMPLEX
- A LARGE RECREATION FACILITY



KEY TAKEAWAYS

What it means for the master plan.

- **NEED FOR MORE PICNIC AREAS AND PLAYGROUNDS WAS WELL SUPPORTED**
- **STRONG DEMAND FOR EXPANDED RECREATION AMENITIES, ESPECIALLY PICKLEBALL FACILITIES**
- **NEED FOR SAFE, CONNECTED WALKING AND BIKING PATHWAYS FOR ALL USERS**
- **GROWING INTEREST IN INDOOR RECREATION OPTIONS TO ADDRESS EXTREME HEAT**
- **IMPORTANCE OF SHADE, SEATING, AND TREE COVERAGE FOR COMFORT IN PARKS**
- **EMPHASIS ON SAFETY, ACCESSIBILITY, AND INCLUSIVE DESIGN FOR ALL AGES AND ABILITIES**



3

TRENDS, DEMANDS & FORECAST



PURPOSE OF TRENDS, DEMANDS & FORECASTING

Analyzes key demographic, social, economic and environmental forces shaping current and future recreational needs.

BENCHMARKING

- UNDERSTAND WHERE SURPRISE STANDS RELATIVE TO COMPARABLE CITIES (ACRES OF PARKS, OPEN SPACE & TRAILS)

LEVEL OF SURVICE (AMENITIES AND FACILITIES)

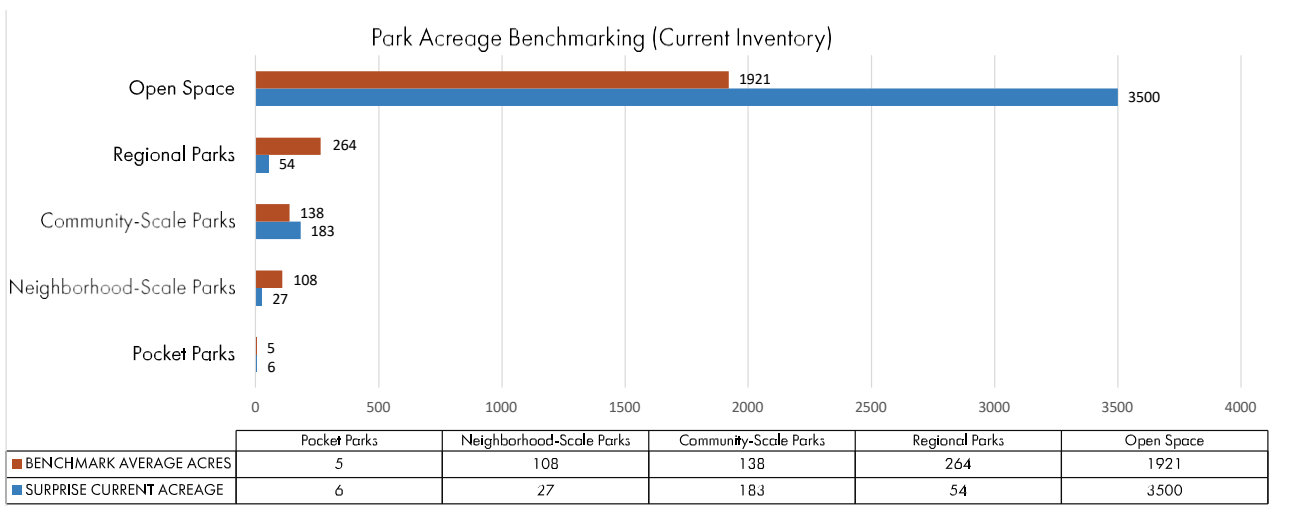
- THE TREND OF NUMBER AND QUALITY OF AMENITIES TO COMPARABLE CITIES

NEEDS ASSESSMENT

- WHAT IS THE DEMAND TO IMPROVE IN THE NUMBER AND POSSIBLY THE QUALITY OF PARKS AND FACILITIES

FORECASTING

- BASED ON POPULATION GROWTH THROUGH 2045, WHAT IS NEEDED FROM ADDITIONAL PARKLANDS AND AMENITIES



PARKS AND OPEN SPACE COMPARISON

DEVELOPED PARKLAND

- INCLUDES ONLY PUBLIC PARK LAND, NOT HOA PARKS

AVERAGE PARKLAND OF COMPARABLE CITIES

- 2.3 ACRES PER 1,000 POPULATION

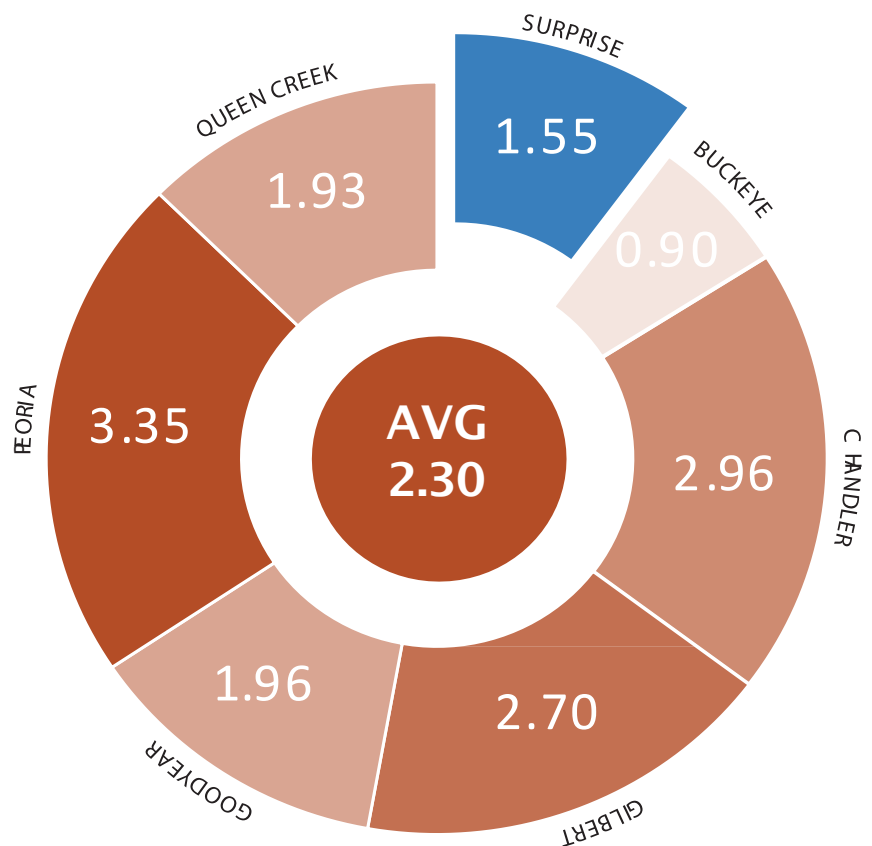
SURPRISE IS SHORT 0.7 ACRES OF PARKLAND

- NEED 125 ADDITIONAL ACRES BY TODAY'S POPULATION 179,149

SURPRISE HAS 3,500 ACRES OF OPEN SPACE !

- McMICKEN DAM AGREEMENT WITH FLOOD CONTROL

The pie chart on the right illustrates:
**DEVELOPED PARKS (ACRES)
 1,000 POPULATION**
per evaluated city.



TODAYS LEVEL OF SERVICE (AMENITIES)

DEFICIT LEVEL

- PLAYGROUNDS
- SAND VOLLEYBALL
- BALLFIELDS
- MULTI-PURPOSE FIELDS
- PICKLEBALL COURTS

STRONG LEVEL

- AQUATIC CENTERS
- BASKETBALL COURTS
- TENNIS COURTS
- SPLASH PADS
- RECREATION CENTERS*



AQUATIC CENTERS
BENCHMARK AVERAGE: 2.71
SURPRISE- CURRENT: 3



RECREATION CENTERS
BENCHMARK AVERAGE: 1.21
SURPRISE- CURRENT: 4*
*small recreation centers



BALLFIELDS
BENCHMARK AVERAGE: 12
SURPRISE - CURRENT: 10



SAND VOLLEYBALL COURTS
BENCHMARK AVERAGE: 9.71
SURPRISE - CURRENT: 5



BASKETBALL COURTS
BENCHMARK AVERAGE: 11.43
SURPRISE- CURRENT: 17



SKATE PARKS
BENCHMARK AVERAGE: 1.29
SURPRISE- CURRENT: 1



DOG PARKS
BENCHMARK AVERAGE: 2.57
SURPRISE- CURRENT: 2



SOCCER /MULTI-PURPOSE FIELDS
BENCHMARK AVERAGE: 13.43
SURPRISE - CURRENT: 11



PICKLEBALL COURTS
BENCHMARK AVERAGE: 18.57
SURPRISE- CURRENT: 16



SPLASH PADS
BENCHMARK AVERAGE: 3
SURPRISE - CURRENT: 3



PLAYGROUNDS
BENCHMARK AVERAGE: 39.57
SURPRISE- CURRENT: 13



TENNIS COURTS
BENCHMARK AVERAGE: 12.29
SURPRISE- CURRENT: 25

FUTURE NEEDS ASSESSMENT (AMENITIES)

RECREATION TO MEET FUTURE POPULATION 373,600 BY 2045*

- 2 AQUATIC CENTERS
- 17 BALLFIELDS
- 3 DOG PARKS
- 24 PICKLEBALL COURTS
- 51 PLAYGROUNDS
- 2 RECREATION CENTERS**
- 2 SKATE PARKS
- 11 SOCCER/MULTI-USE
- 17 BALLFIELDS
- 3 SPLASH PADS



AQUATIC CENTERS
SURPRISE - CURRENT: 3
2045 NEEDS*: +2



RECREATION CENTERS
SURPRISE - CURRENT: 2**
2045 NEEDS*: +2



BALLFIELDS
SURPRISE - CURRENT: 10
2045 NEEDS*: +17



SAND VOLLEYBALL COURTS
SURPRISE - CURRENT: 5
2045 NEEDS*: +14



BASKETBALL COURTS
SURPRISE - CURRENT: 17
2045 NEEDS*: +2



SKATE PARKS
SURPRISE - CURRENT: 1
2045 NEEDS*: +2



DOG PARKS
SURPRISE - CURRENT: 2
2045 NEEDS*: +3



SOCCER / MULTI-PURPOSE FIELDS
SURPRISE - CURRENT: 11
2045 NEEDS*: +11



PICKLEBALL COURTS
SURPRISE - CURRENT: 16
2045 NEEDS*: +24



SPLASH PADS
SURPRISE - CURRENT: 3
2045 NEEDS*: +3



PLAYGROUNDS
SURPRISE - CURRENT: 13
2045 NEEDS*: +51



TENNIS COURTS
SURPRISE - CURRENT: 25
2045 NEEDS*: +2

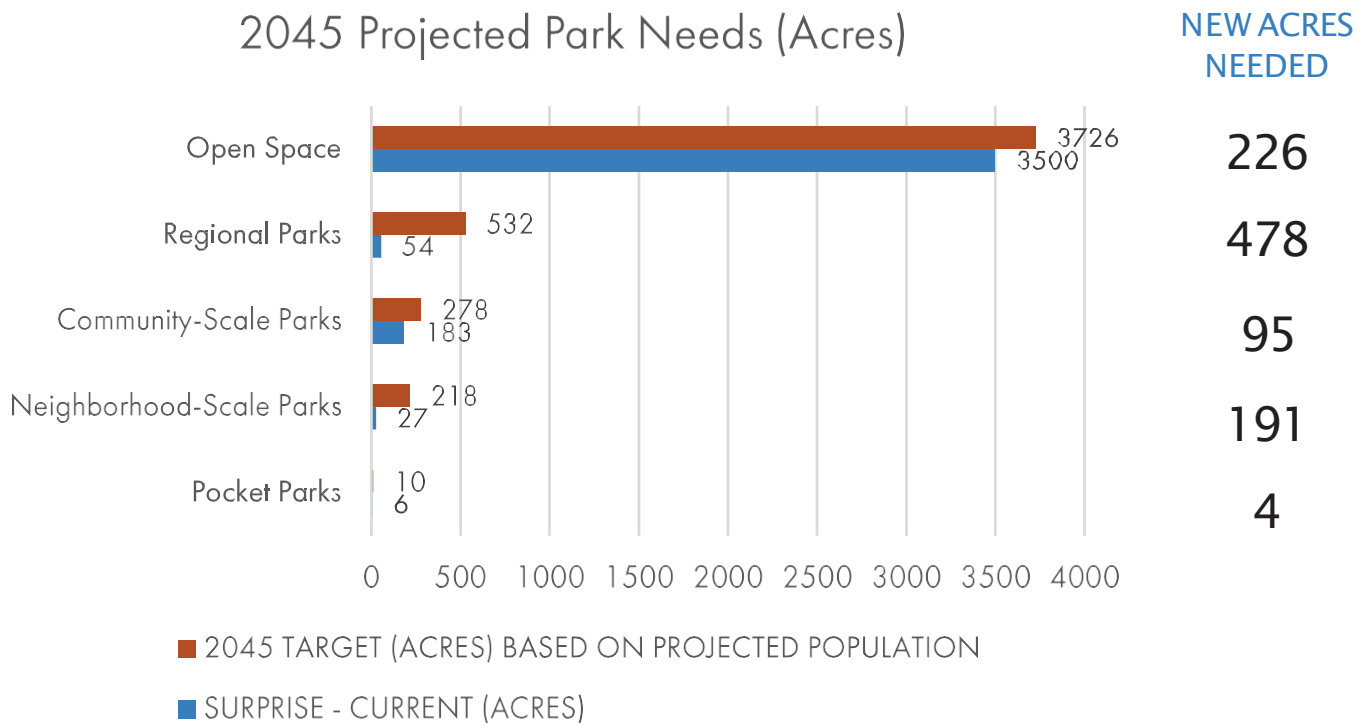
*Based on projected population growth, MAG & 2045 General Plan

**Current Recreation Centers do not meet standard level of service

FORECAST (PARK AND OPEN SPACE)

PARK ACREAGE NEEDS BY 2045

- BASED ON LEVEL OF SERVICE, 768 ACRES OF DEVELOPED PARKLAND WILL BE NEEDED
- 226 ACRES OF ADDITIONAL OPEN SPACE WILL BE NEEDED



Park Acreage Needs Based on Projected 2045 Population

KEY TAKEAWAYS

From trends and projections, several considerations inform the master plan's strategic direction.

- ACCELERATED GROWTH REQUIRES PROACTIVE PLANNING
- CONNECTIVITY IS CRUCIAL
- SUSTAINABILITY MUST BE CENTRAL
- EQUITY & ACCESS MUST SHAPE INVESTMENTS
- BALANCED RECREATION SYSTEM IS AN ON-GOING NEED
- DIVERSIFIED FUNDING & PHASING IS PARAMOUNT



4

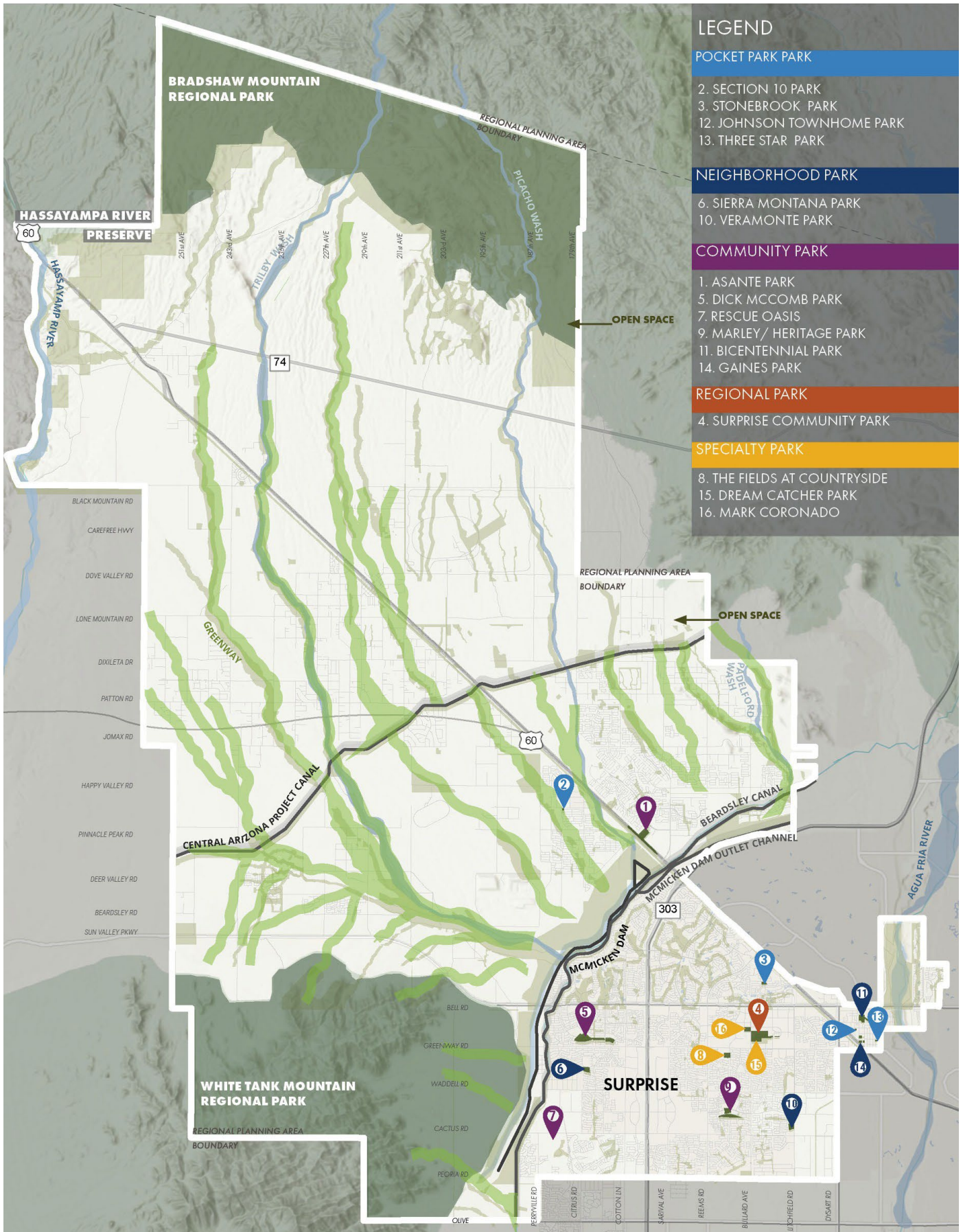
EXISTING PARKS AND FUTURE AMENITIES



WHERE WE ARE TODAY

- **1 REGIONAL PARK LEVEL PARK (SURPRISE COMMUNITY PARK)**
- **11 POCKET PARKS, NEIGHBORHOOD, AND COMMUNITY LEVEL PARKS (12 PARKS)**
- **3 SPECIALITY PARKS (FIELDS AT COUNTRYSIDE, DREAM CATCHER PARK, RESCUE OASIS)**
- **3,500 ACRES OF OPEN SPACE (McMICKEN DAM AREA)**





Existing Parks

EXISTING PARK CLASSIFICATION

PARK CLASSIFICATION	SIZE	AMENITIES	EXAMPLES OF EXISTING PARKS
Pocket Parks	<5 Acres	Playground Ramada Open Turf	Johnson Townhome Park Section 10 Park Stonebrook Park Three Star Park
Neighborhood Parks	5-15 Acres	Playground Ramada Open Turf Multi-Use Fields	Sierra Montana Park Veramonte Park
Community Parks	25-100 Acres	Playground Ramada Open Turf Multi-Use Fields Structured Fields Swimming Pool Fishing Lake Skate Park Dog Park Equestrian Facilities Restrooms	Asante Community Park Bicentennial Park Dick McComb Park Gaines Park Rescue Oasis Marley / Heritage Park
Regional Parks	100+ Acres	Event Grounds Group Ramadas Structured Fields Tournament Facilities Aquatic Center Recreation Center Civic Facilities (Library) Equestrian Facilities Fishing Lake Skate Park Dog Park Restrooms	Surprise Community Park
Specialty Parks and Facilities	Varies	Tournament Facilities Programmed Events Opportunity Facilities Skate Park BMX Park Dog Park Restroom	The Fields at Countryside Dream Catcher Park Mark Coronado Park
Greenways, Trails, and Open Space	Varies	Local Trails Community Trails Regional Trails Conservation Areas Wash Corridors Mountain Parks	Lizard Run McMicken Dam
Preserve	500+ Acres	Developed Trailheads Ramadas Equestrian Facilities Restrooms	White Tank Mountain Regional Park (Maricopa County Parks)

WHERE WE NEED TO BE

KEY COMPONENTS

- **IMPROVE EXISTING PARKS (ADD AND UPDATE PLAYGROUNDS, ADD RAMADAS AND SPORT COURTS)**
- **2 REGIONAL PARKS BY 2045**
- **6 COMMUNITY PARKS BY 2045**
- **2 RECREATION FACILITIES (FULL FITNESS, MULTI-PURPOSE ROOMS, MULTI-USE INDOOR COURTS)**
- **2 AQUATIC FACILITIES (i.e. RESCUE OASIS)**
- **1 FIELDHOUSE (INDOOR COURT SPORTS)**



5

THE MASTER PLAN



PLAN ELEMENTS

To better understand the complexity of the Master Plan, the plan is based on a series of individual plan elements that describe the vision for a connected community framework of parks and open spaces.

GREEN ARMATURE FRAMEWORK

Natural open space (major washes) systems and man-made structures (CAP Canal, McMicken Dam) provide the basis for a green armature for the city.



PARKS

Great parks are the backbone of any parks system. They vary in size from over 100-acre regional parks to small neighborhood parks.



COMMUNITY FACILITIES

A community recreation center is a shared public facility designed to support recreation, learning, wellness, and social connection.



OPEN SPACE AND NATURAL LANDS

Open space plays a large part of the city's physical layout. Mountains to the west and north frame the city.



GREENWAYS/LINEAR PARKS/PARKWAYS

Collaboration with the development community to establish Greenways along the city's natural wash corridors.



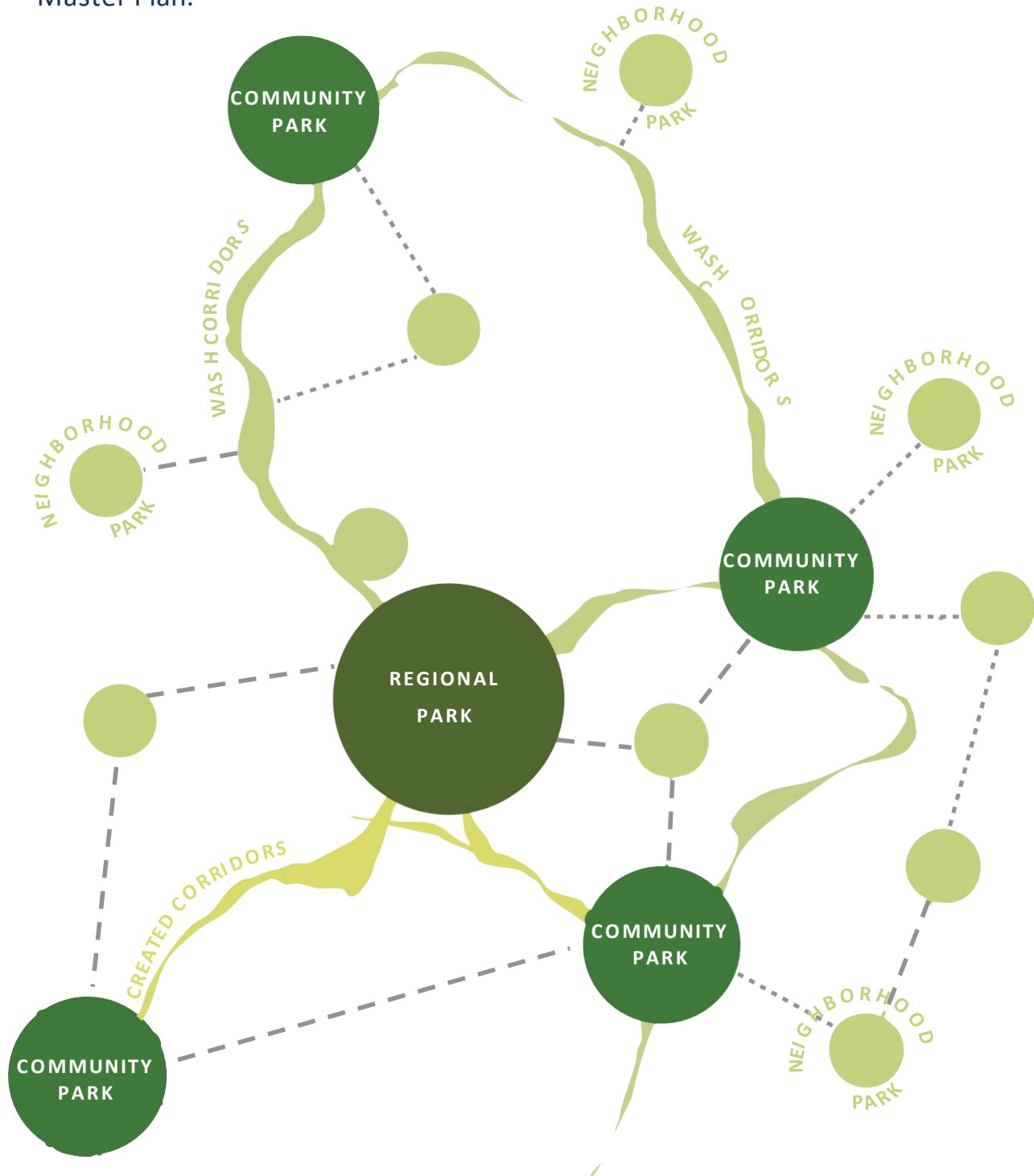
BIKEWAYS, PATHS AND TRAILS

A well-designed bikeway, along with paths and trails, is critical for connecting a city and providing a healthy alternative to vehicles in a modern urban environment.



CONNECTED FRAMEWORK

The primary structure of the plan builds on this connected community framework, a series of plan elements that, when combined, create the overall Parks and Recreation Master Plan.



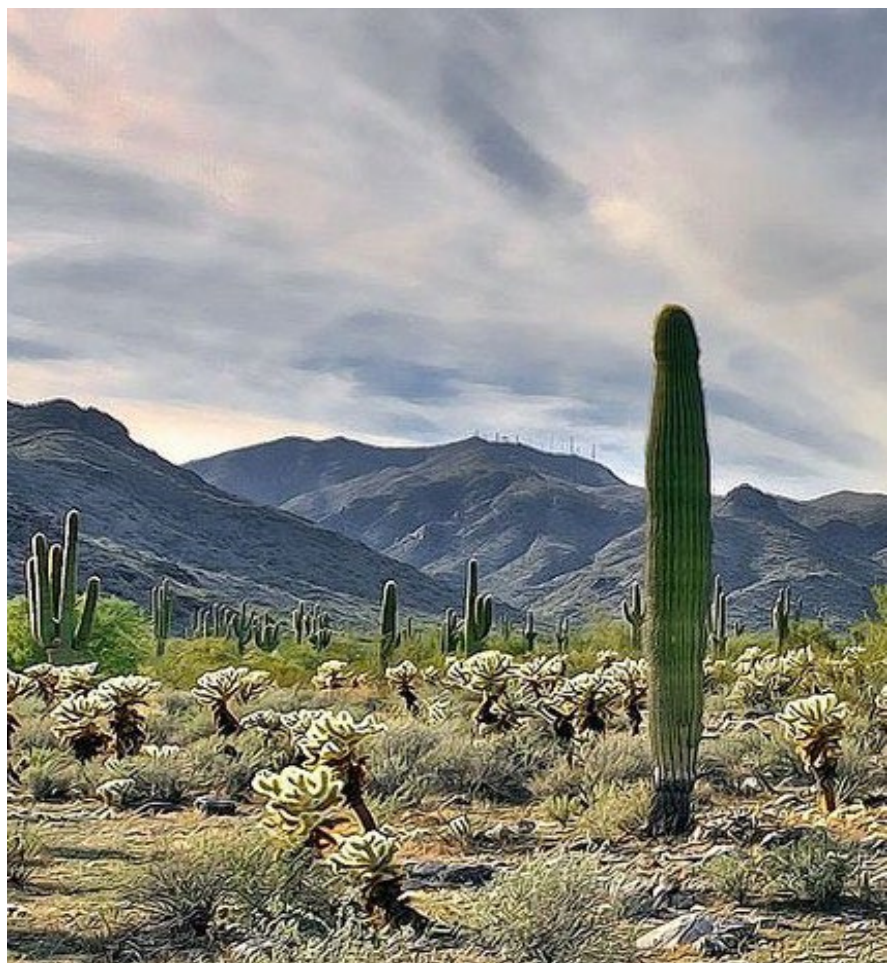
A Connected Community Framework, developed in the 2015 Master Plan, provides the guiding framework for a connected system of parks, open space, and trails.

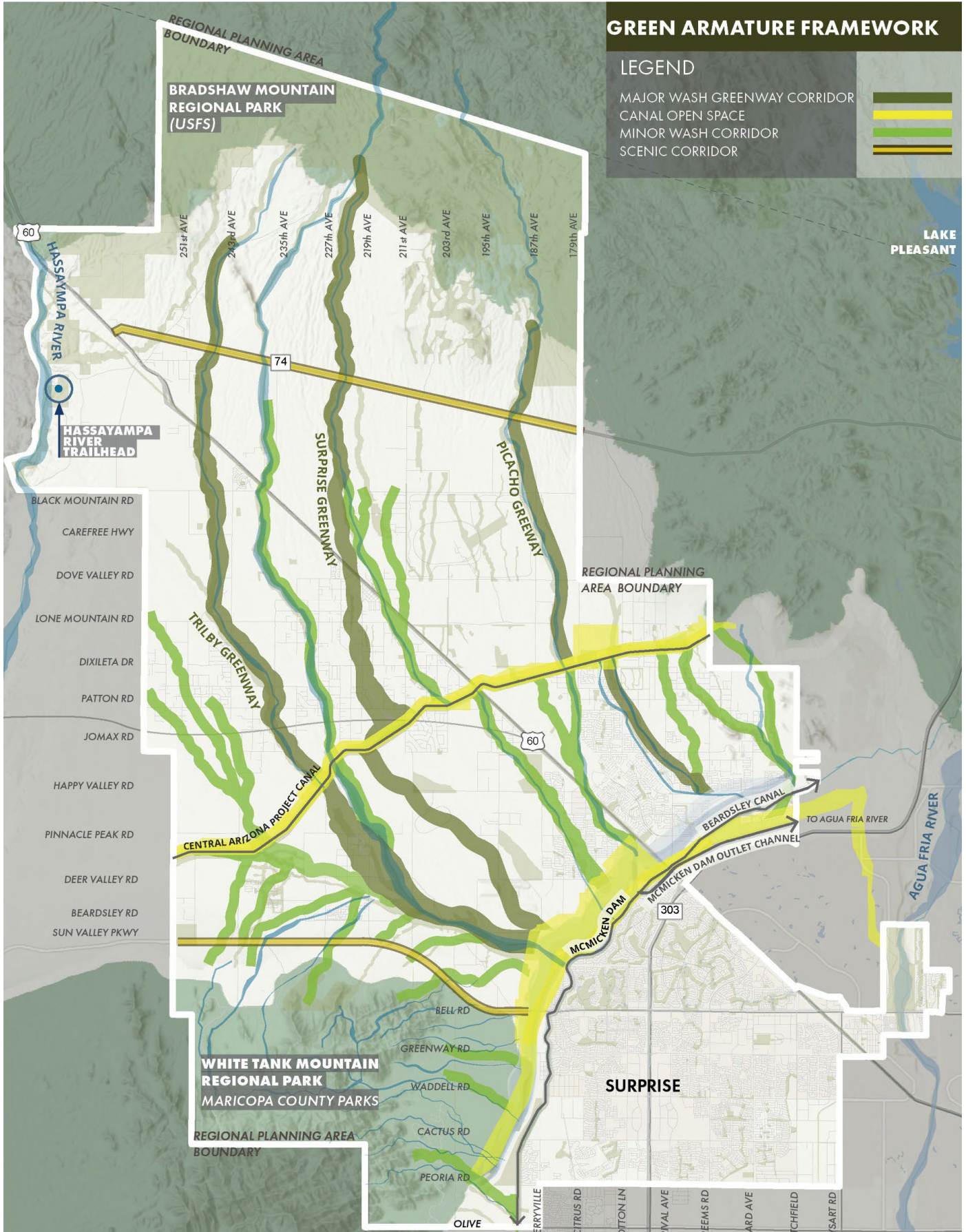
GREEN ARMATURE

KEY COMPONENTS

- 1 NATURAL FEATURES GUIDE THE FORM, CREATES THE SPINE OF THE PARK SYSTEM
- 2 WASHES CONNECT THE CITY PARKS WITH NEIGHBORHOODS
- 3 KEY DRAINAGE FUNCTIONS WILL BE PRESERVED WHILE PROTECTING CRITICAL HABITAT AND WILDLIFE CORRIDORS
- 4 RESIDENTS WILL HAVE CLOSE PROXIMITY TO NATURE

This natural setting of mountains connected by washes provides a unique opportunity to create a **NATURAL FRAMEWORK** for the City.



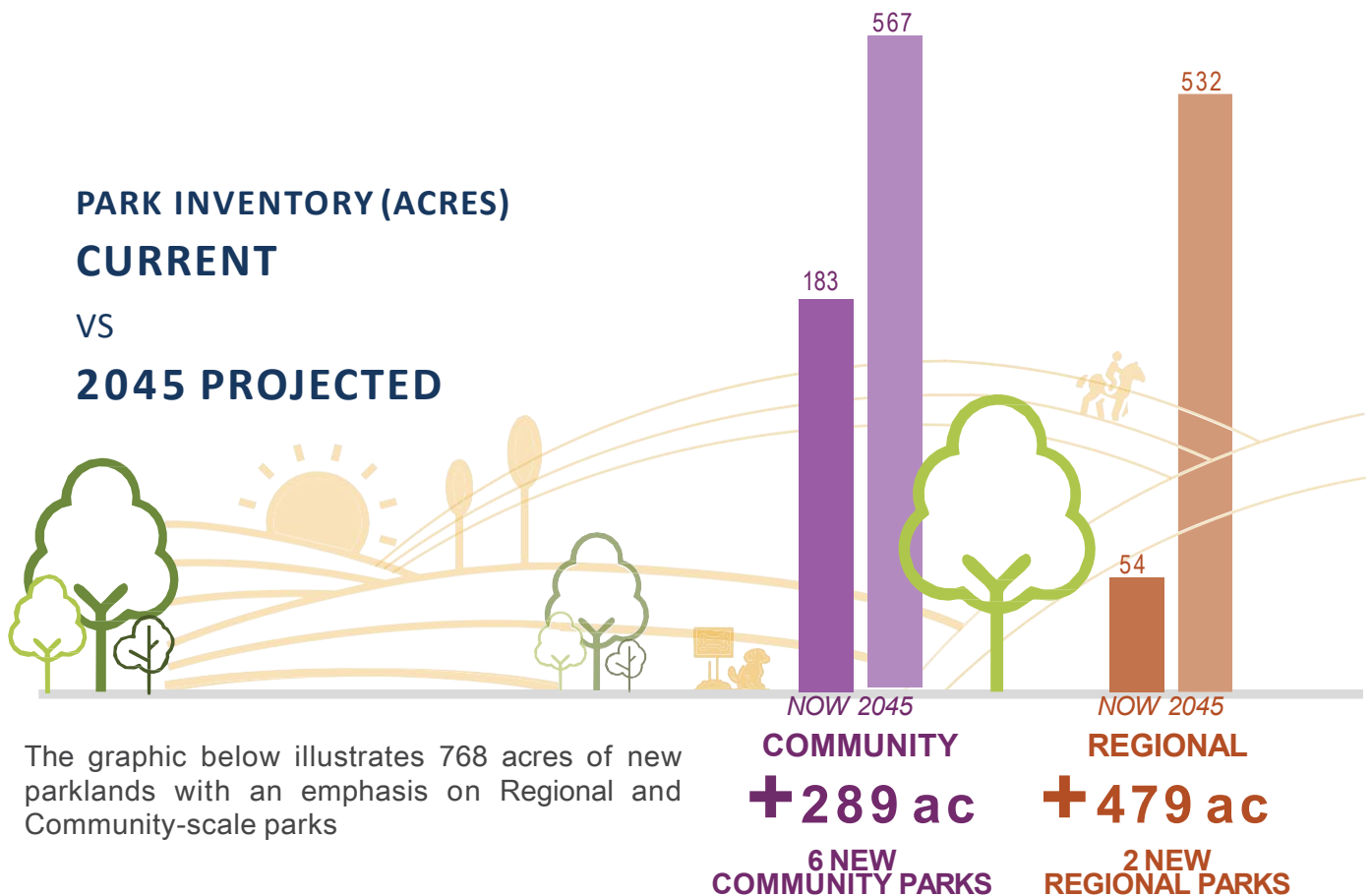


Green armature framework highlights the natural landscape and manmade features that create the foundation of Surprise parks, open space, and city form.

PARKS

KEY COMPONENTS

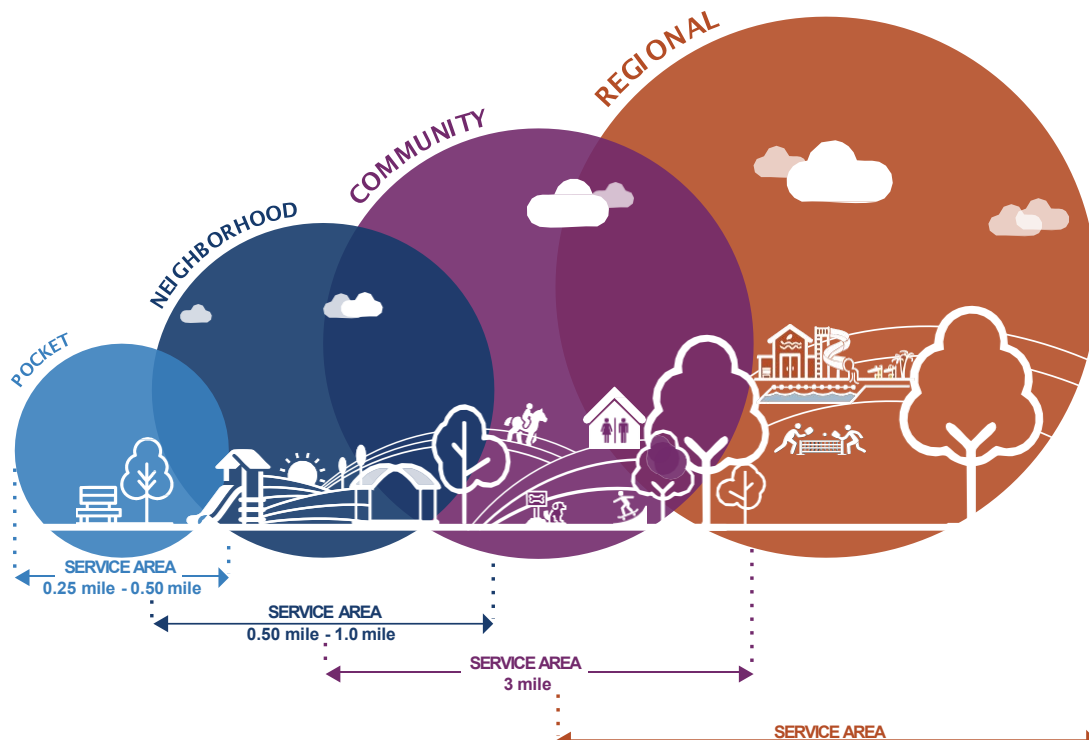
- RECOMMENDS **768 ACRES** OF NEW PARKLANDS BY 2045
- **2** NEW REGIONAL PARKS AT 100-200 ACRES EACH
- **6** NEW COMMUNITY PARKS AT 25-75 ACRES EACH
- PLAN DOES NOT RECOMMEND NEIGHBORHOOD AND POCKET PARK SIZE PARKS. TYPICALLY PROVIDED BY HOA

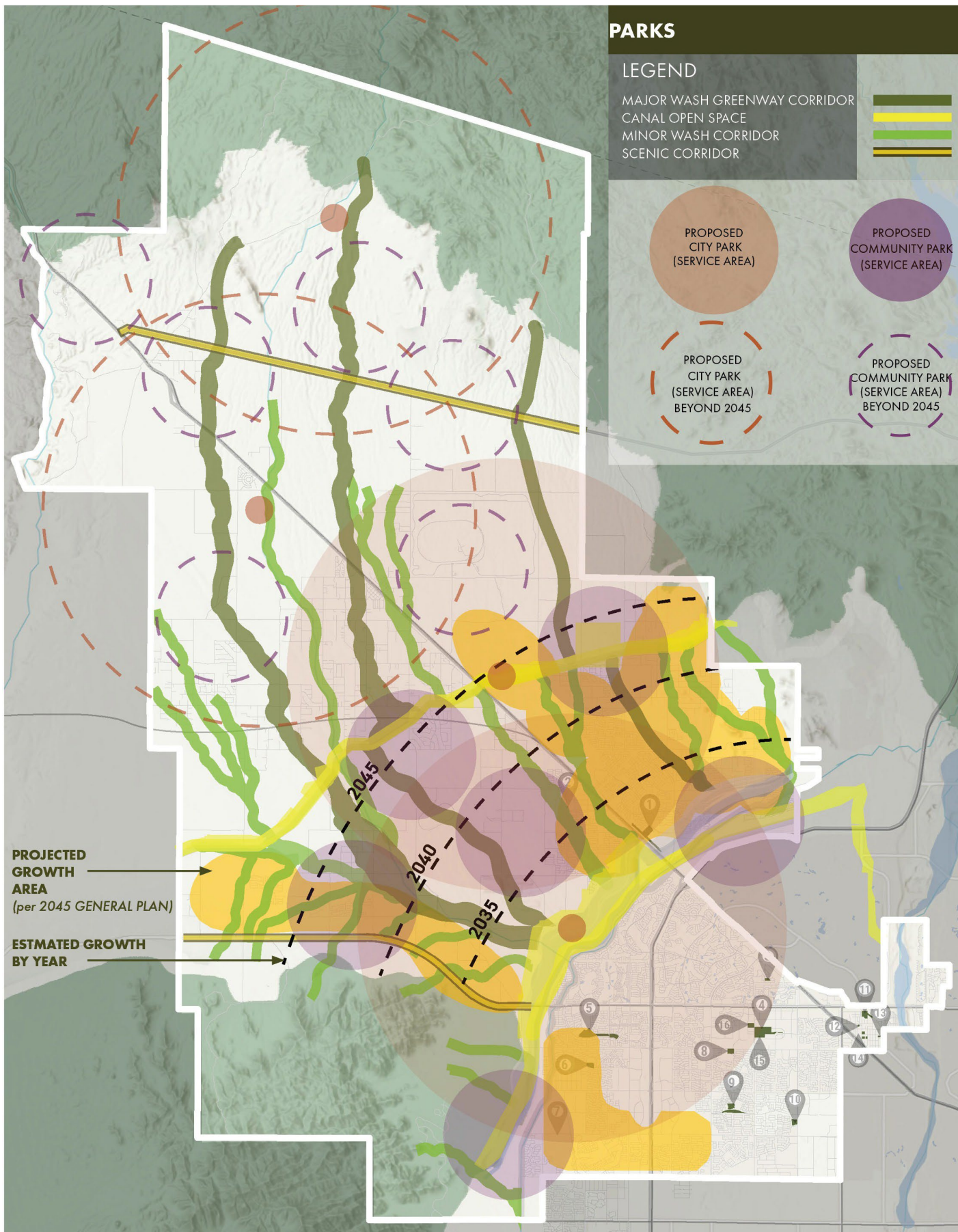


PARK DISTRIBUTION

KEY COMPONENTS

- DISTRIBUTION TO SERVE EXISTING RESIDENTS AND FUTURE GROWTH AREA
- UTILIZE McMICKEN DAM LAND AREA FOR A NEW REGIONAL PARK AND POSSIBLY 2 COMMUNITY PARKS
- POSSIBLE NEW REGIONAL PARK ON CENTRAL ARIZONA PROJECT, NORTH OF CANAL, SIMILAR TO REACH 11 IN PHOENIX





PROJECTED GROWTH AREA
(per 2045 GENERAL PLAN)

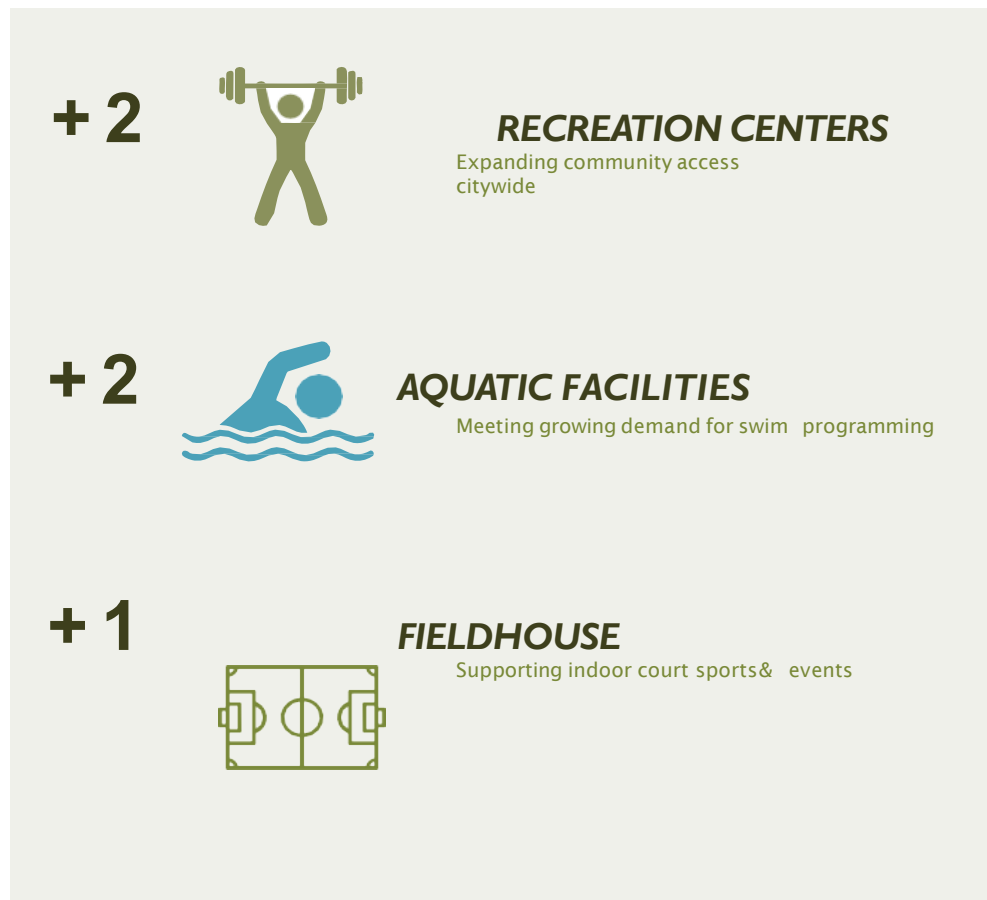
ESTIMATED GROWTH BY YEAR

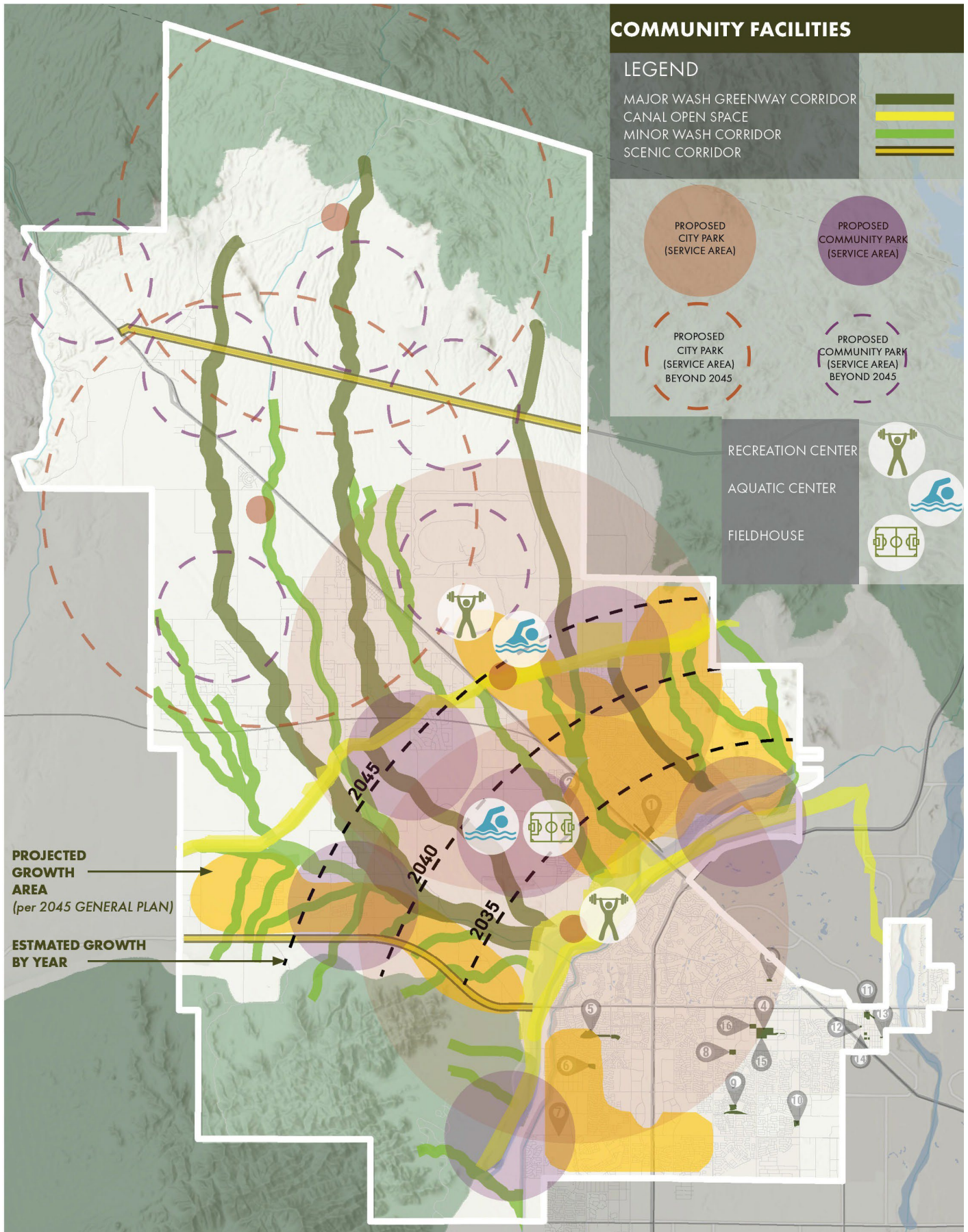
COMMUNITY FACILITIES

KEY COMPONENTS

- **2** NEW RECREATION CENTERS BY 2045
- **2** NEW AQUATIC FACILITIES BY 2045
- **1** NEW FIELDHOUSE BY 2045 SUPPORTING INDOOR COURT SPORTS INCLUDING BASKETBALL, VOLLEYBALL AND PICKLEBALL.

2045 COMMUNITY FACILITY FORECAST



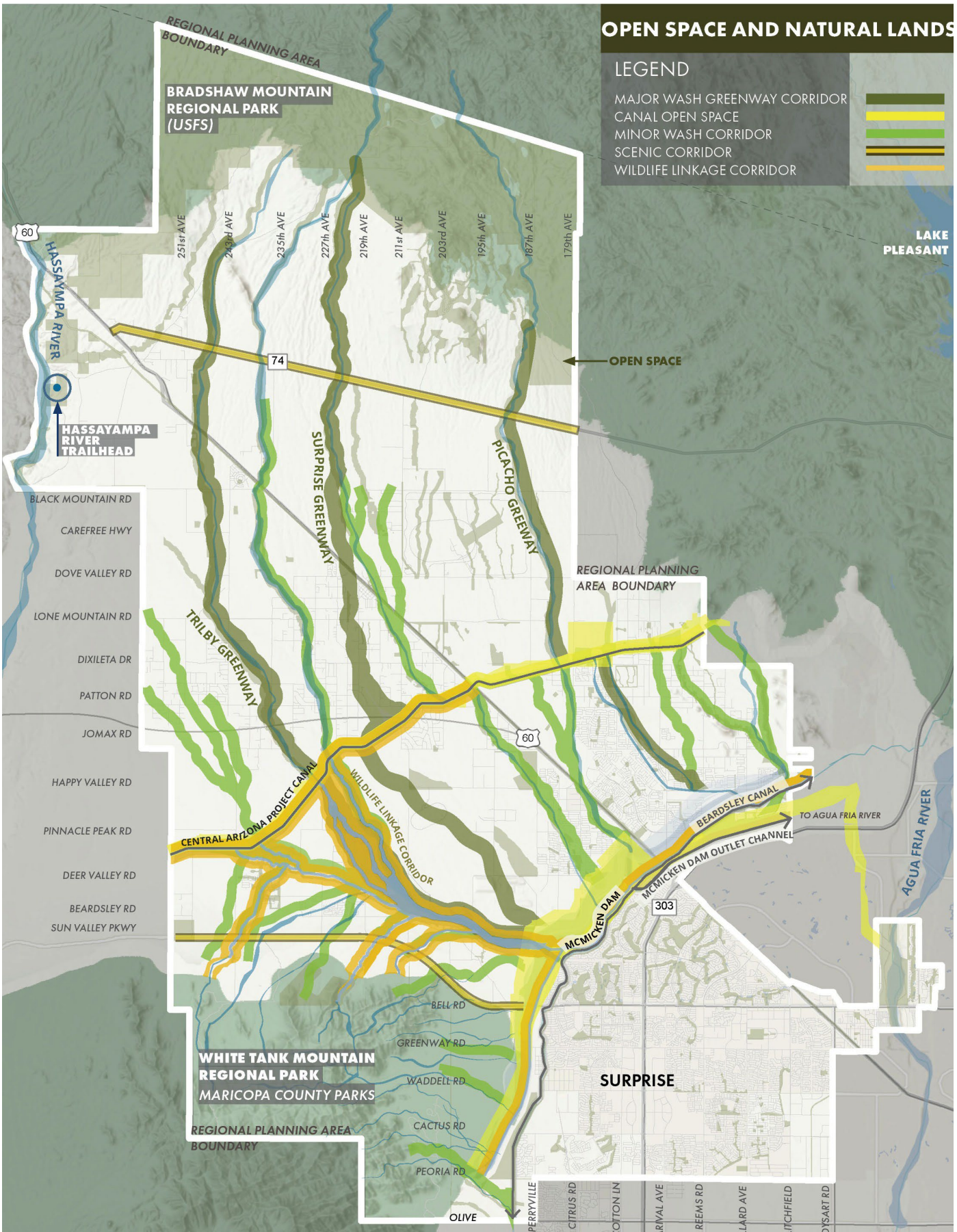


OPEN SPACE AND NATURAL LANDS

KEY COMPONENTS

- **McMICKEN DAM** PROVIDES 3,500 ACRES REPRESENTING SIGNIFICANT OPEN SPACE FOR PASSIVE RECREATION
- **CENTRAL ARIZONA PROJECT CANAL (CAP)** REPRESENTS A POSSIBLE FUTURE OPEN SPACE SPANNING THE CITY EAST TO WEST.
- **WHITE TANK REGIONAL PARK** WITH POSSIBLE NEW NORTH TRAILHEAD MANAGED BY MARICOPA COUNTY PARKS DEPARTMENT
- McMICKEN DAM, CAP, AND WHITE TANK REGIONAL PARK REPRESENT A **SIGNIFICANT REGIONAL OPEN SPACE** THAT CONNECT WASH AND WILDLIFE CORRIDORS





OPEN SPACE AND NATURAL LANDS

LEGEND

- MAJOR WASH GREENWAY CORRIDOR
- CANAL OPEN SPACE
- MINOR WASH CORRIDOR
- SCENIC CORRIDOR
- WILDLIFE LINKAGE CORRIDOR

LAKE PLEASANT

OPEN SPACE

REGIONAL PLANNING AREA BOUNDARY

SURPRISE

BRADSHAW MOUNTAIN REGIONAL PARK (USFS)

WHITE TANK MOUNTAIN REGIONAL PARK MARICOPA COUNTY PARKS

REGIONAL PLANNING AREA BOUNDARY

- BLACK MOUNTAIN RD
- CAREFREE HWY
- DOVE VALLEY RD
- LONE MOUNTAIN RD
- DIXILETA DR
- PATTON RD
- JOMAX RD
- HAPPY VALLEY RD
- PINNACLE PEAK RD
- DEER VALLEY RD
- BEARDSLEY RD
- SUN VALLEY PKWY

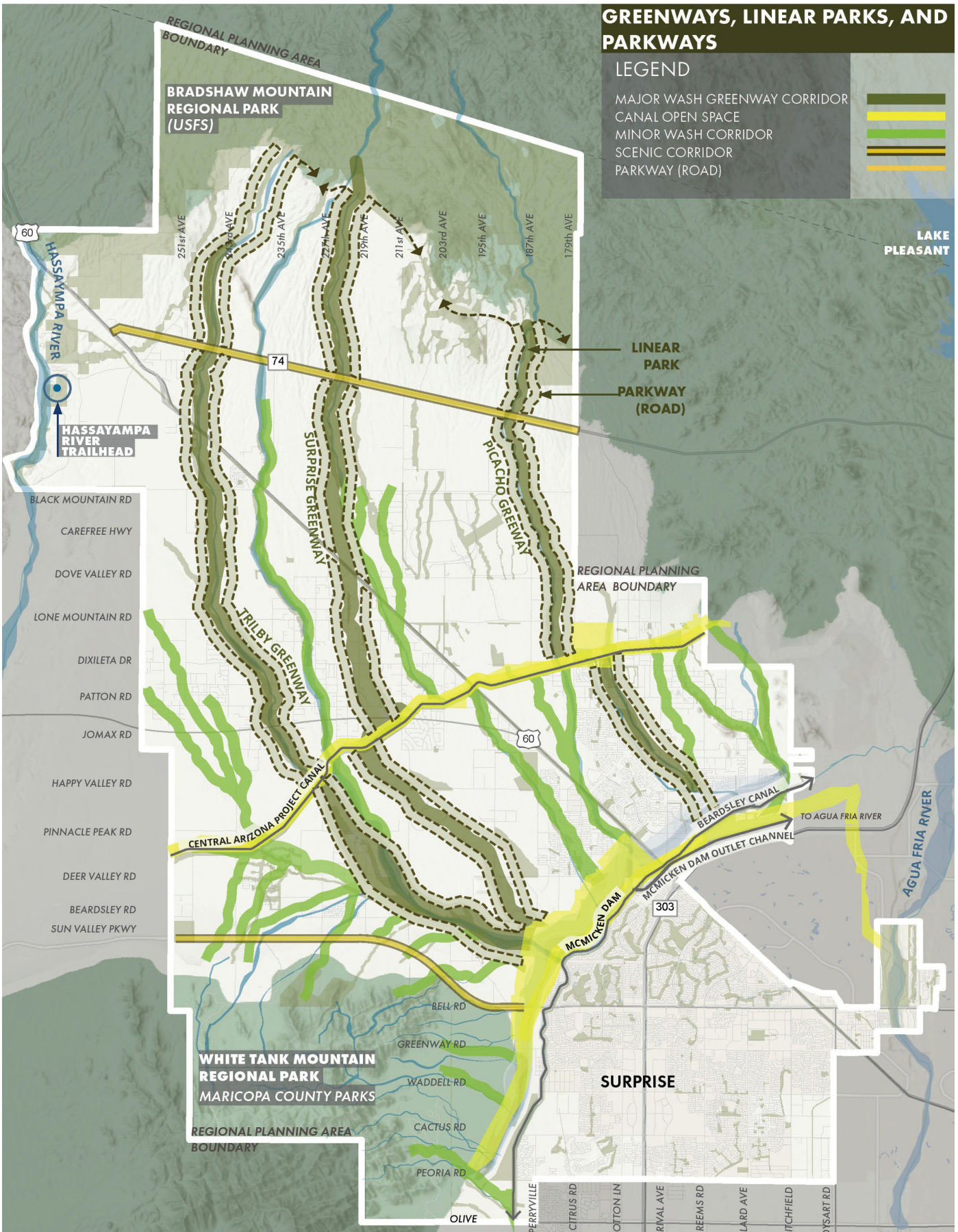
- PERRYVILLE
- CITRUS RD
- COTTON LN
- ARIVAL AVE
- REEMS RD
- LLARD AVE
- LITCHFIELD
- DYSART RD

GREENWAYS, LINEAR PARKS & PARKWAYS

KEY COMPONENTS

- PRESERVATION AND ENHANCEMENT OF NATURAL WASHES AS A **SIGNATURE FEATURE OF CITY**
- **PARKWAYS ADJACENT TO LINEAR PARKS** ENSURE ACCESSIBLE OPEN SPACE TO THE PUBLIC
- **INDIAN BEND WASH** IN SCOTTSDALE IS AN EXAMPLE OF AN 11-MILE-LONG LINEAR PARK WITH AN ADJACENT PARKWAY
- LINEAR PARKS CAN BE **BOTH NATURAL AND DEVELOPED PARKS**
 - *Trilby Greenway Path* **+ 9.1 MILES**
 - *Surprise Greenway Path* **+ 6.1 MILES**
 - *Picacho Greenway Path* **+ 5.2 Miles**



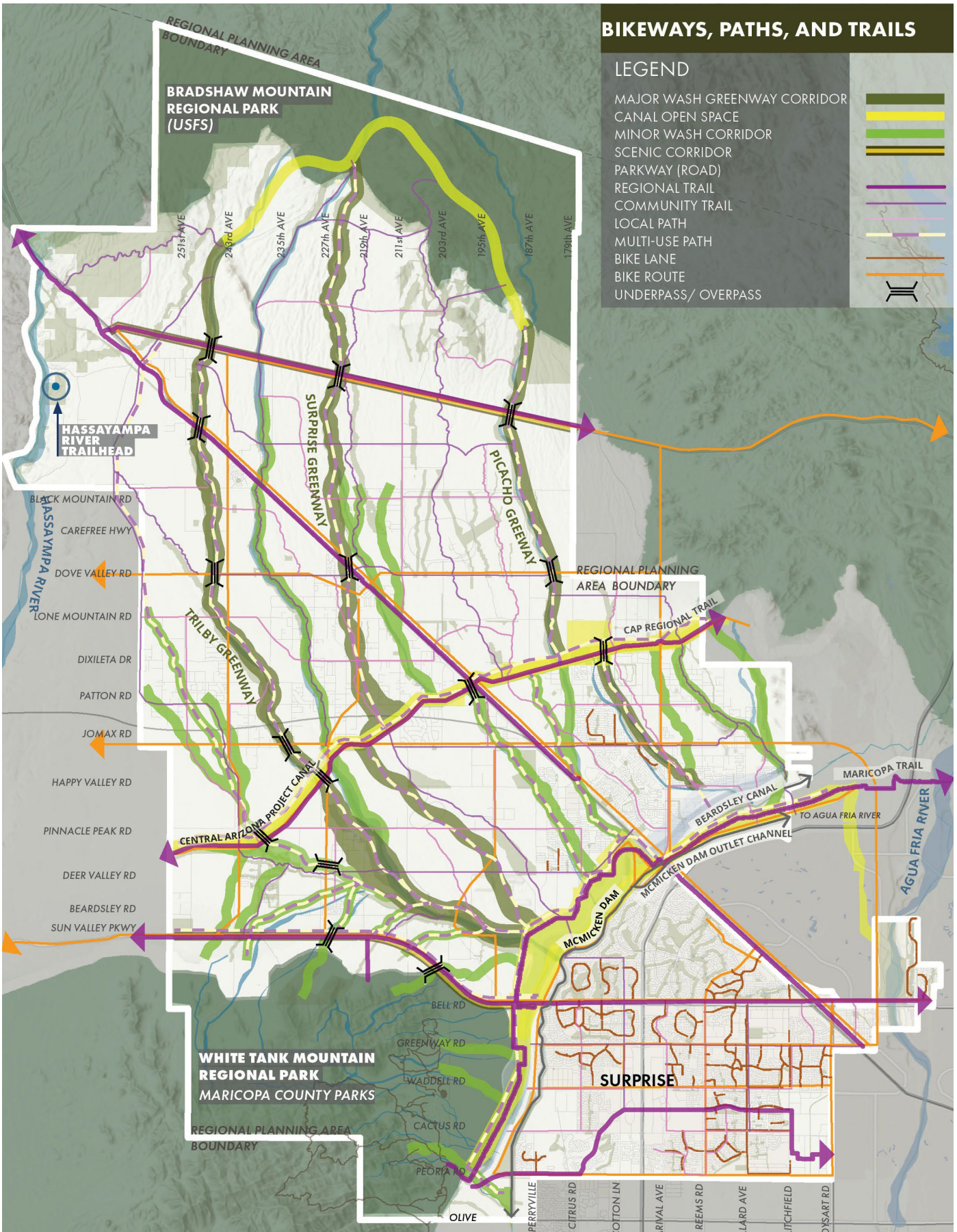


BIKEWAYS, PATHS, AND TRAILS

KEY COMPONENTS

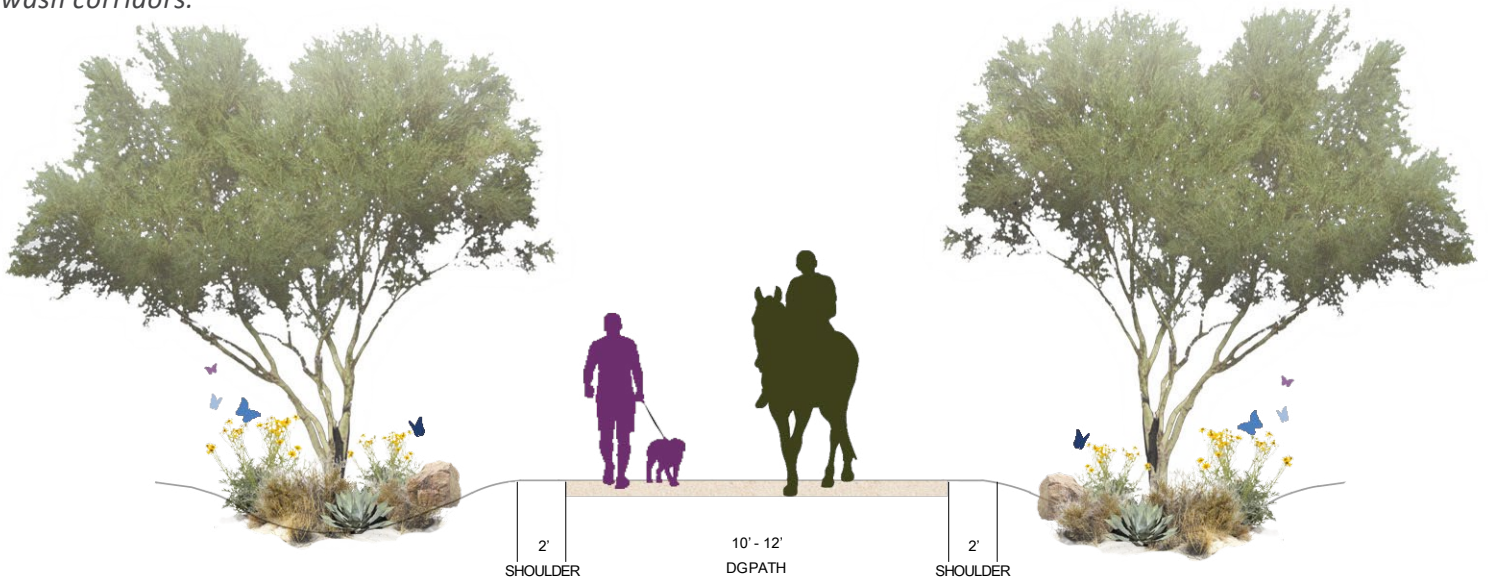
- **34 MILES OF REGIONAL PATHS BY 2045 ALONG McMICKEN DAM, CAP, AND GREENWAYS**
- **45 MILES OF NATURAL SURFACE TRAILS, PRIMARILY WITHIN McMICKEN DAM AREA AND WASH CORRIDORS**
- **COMMUNITY PATHS ALONG MINOR AND MAJOR ARTERIALS PROVIDE ACTIVE TRANSPORTATION ROUTES, CONNECTING THE ENTIRE CITY. REQUIRES COORDINATION WITH TRANSPORTATION MASTER PLAN**
- **LOCAL PATHS PROVIDE CONNECTIONS TO COMMUNITY AND REGIONAL TRAIL SYSTEM**





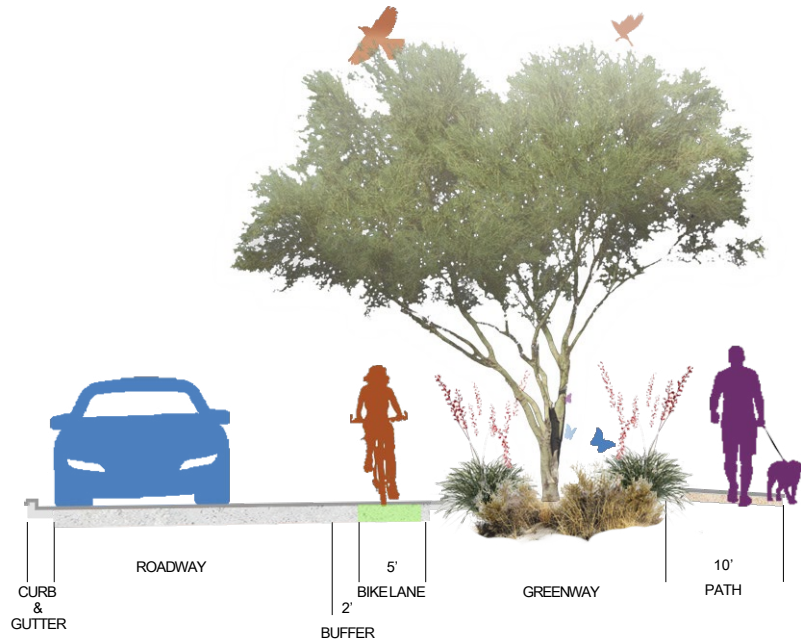
NATURAL SURFACE TRAIL

Soft paths indicate unpaved decomposed granite paths that will be primarily found along wash corridors, allowing for minimal disturbance to natural wash corridors.



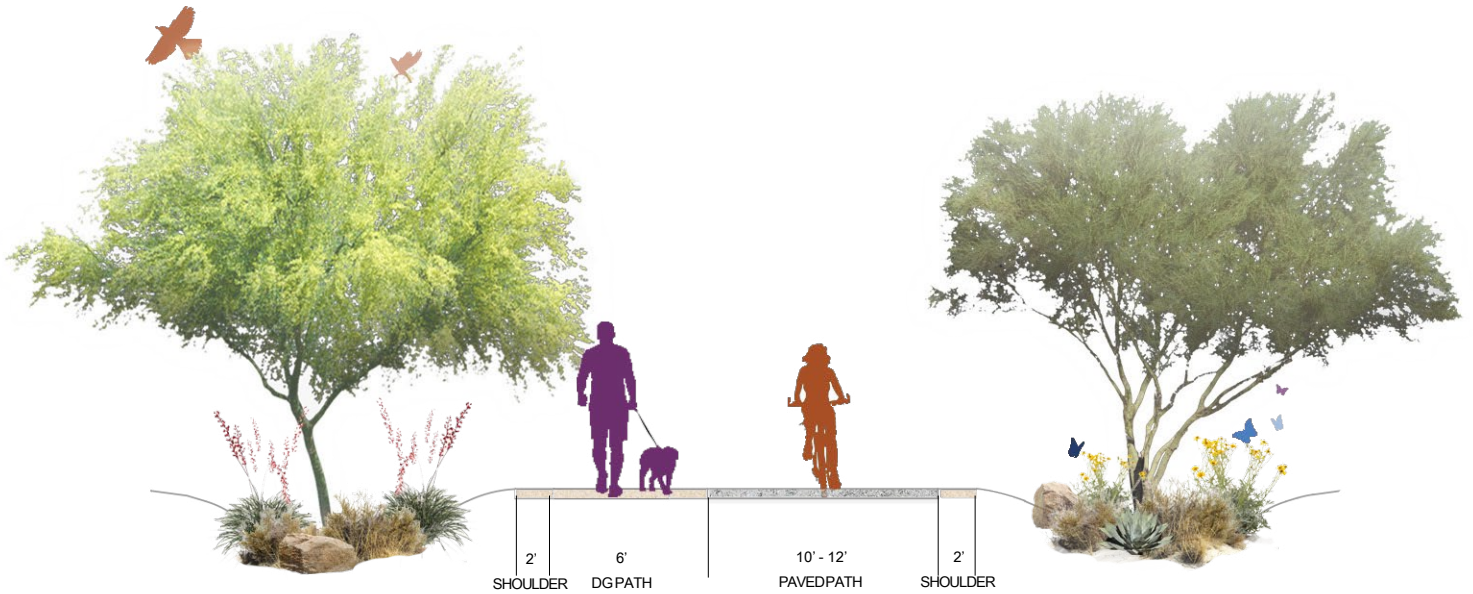
COMMUNITY PATH

Hard paths comprised of paved walkways to run alongside transit and roadway corridors, allowing for integration of alternative modes of transportation among the vehicular modes.



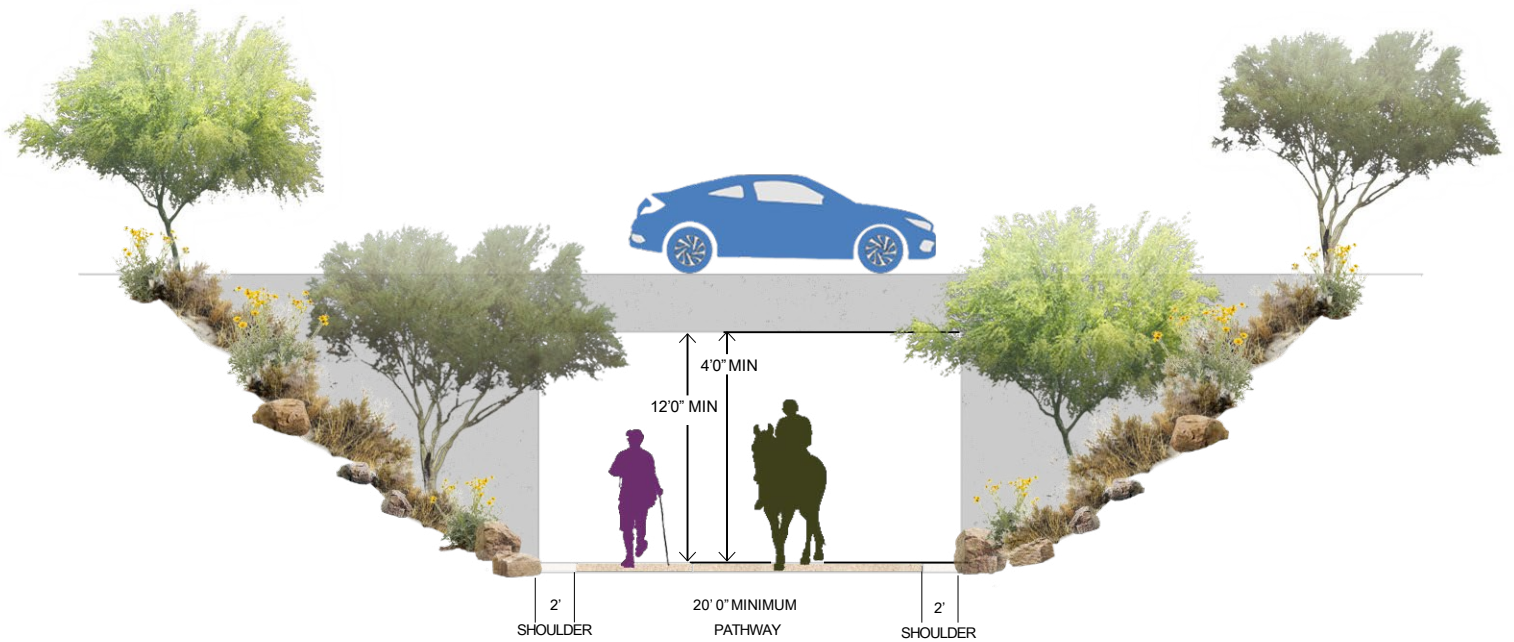
REGIONAL PATH

Combined path types (consisting of both paved and unpaved walkways) will connect smaller, localized paths for a seamless circulation infrastructure.



GRADE-SEPARATED PATHWAYS

Wash and road crossing will intersect at overpasses to allow for a continuous flow of separated travel vehicular versus pedestrian.



6

PLAN IMPLEMENTATION



OVERVIEW

KEY COMPONENTS

- INVEST IN EXISTING PARKS
- DEVELOP A FUNDING STRATEGY FOR NEW PARKS AND COMMUNITY FACILITIES
- COORDINATE WITH CITY DEPARTMENTS FOR THE IMPLEMENTATION OF AN ACTIVE TRANSPORTATION SYSTEM
- BEGIN DISCUSSIONS WITH CAP FOR POSSIBLE NEW PARKLANDS
- REINFORCE NEED AND IMPORTANCE OF A CONNECTED GREENWAY AND PARKWAY SYSTEM AND DEVELOP DEVELOPER INCENTIVES
- DEVELOP McMICKEN DAM PASSIVE TRAILS AND TRAILHEAD



INVESTMENT IN EXISTING PARKS

STRATEGY

- IDENTIFY AND LIST SPECIFIC NEEDS AND IMPROVEMENTS FOR EXISTING PARKS
- IMPLEMENT IMPROVEMENTS AS REPLACEMENTS AT THE END OF THEIR LIFECYCLE
- FUND OVER A 10-15 YEAR TIMEFRAME
- FUNDING FOR LARGER IMPROVEMENTS MAY REQUIRE DEDICATED FUNDING



NEW PARKS AND COMMUNITY FACILITIES

STRATEGY

- IDENTIFY 1 REGIONAL AND 2 COMMUNITY PARKS ALONG McMICKEN DAM
- IDENTIFY 4 NEW COMMUNITY PARK LOCATIONS WITH THE 2045 PROJECTED GROWTH AREA
- PARTNER WITH COMMUNITY DEVELOPERS TO IDENTIFY COMMUNITY PARK LOCATIONS
- IDENTIFY POSSIBLE DIRECT LAND PURCHASES FOR COMMUNITY PARKS AHEAD OF DEVELOPMENT
- BEGIN THE APPLICATION PROCESS FOR BUREAU OF RECLAMATION TO ALLOW A RECREATIONAL USE ALONG THE CAP



McMICKEN DAM TRAILS AND NATURAL OPEN SPACE

STRATEGY

- IDENTIFY POINTS OF INTEREST WITH McMICKEN DAM FOR POSSIBLE TRAIL LOCATIONS
- IDENTIFY LOCATION OF A TRAILHEAD ALONG SUN VALLEY PARKWAY
- DISCUSS POSSIBLE FORMATION OF A McMICKEN DAM TRAIL SYSTEM STEWARDS TO ASSIST IN FUNDING, CONSTRUCTING AND MAINTAINING TRAILS
- ESTABLISH PARK RANGER DUTIES ALONG CORRIDOR
- IDENTIFY POSSIBLE DIRECT LAND PURCHASES FOR COMMUNITY PARKS AHEAD OF DEVELOPMENT
- BEGIN THE APPLICATION PROCESS FOR BUREAU OF RECLAMATION TO ALLOW A RECREATIONAL USE ALONG THE CAP

GREENWAYS, PARKWAYS AND PATH SYSTEM

STRATEGY

- COMMUNITY DEVELOPMENT AND PARKS DEPARTMENTS TO PRIORITIZE THE MAJOR WASH CORRIDORS AS PUBLIC OPEN SPACE
- CITY TO PROVIDE INCENTIVES TO THE DEVELOPMENT COMMUNITY TO PRESERVE AND PROVIDE GREENWAYS (i.e. DENSITY TRANSFERS, RECREATIONAL AND DRAINAGE EASEMENTS)
- TRANSPORTATION DEPARTMENT TO SUPPORT IMPLEMENTATION OF AN ACTIVE TRANSPORTATION PLAN
- TRANSPORTATION AND ENGINEERING DEPARTMENTS TO WORK COOPERATIVELY TO PROVIDE GRADE SEPARATED ROADWAYS AT GREENWAY CROSSINGS
- FUND PATH CONSTRUCTION THROUGH SPECIFIC ACTIVE TRANSPORTATION FUNDING



SURPRISE
ARIZONA

PARKS & RECREATION ADVISORY COMMISSION
PARKS AND RECREATION
MASTER PLAN UPDATE
April 27, 2026

